

# Build confidence in your results



With PerkinElmer's  
Specimen Gate® MSMS Data Suite

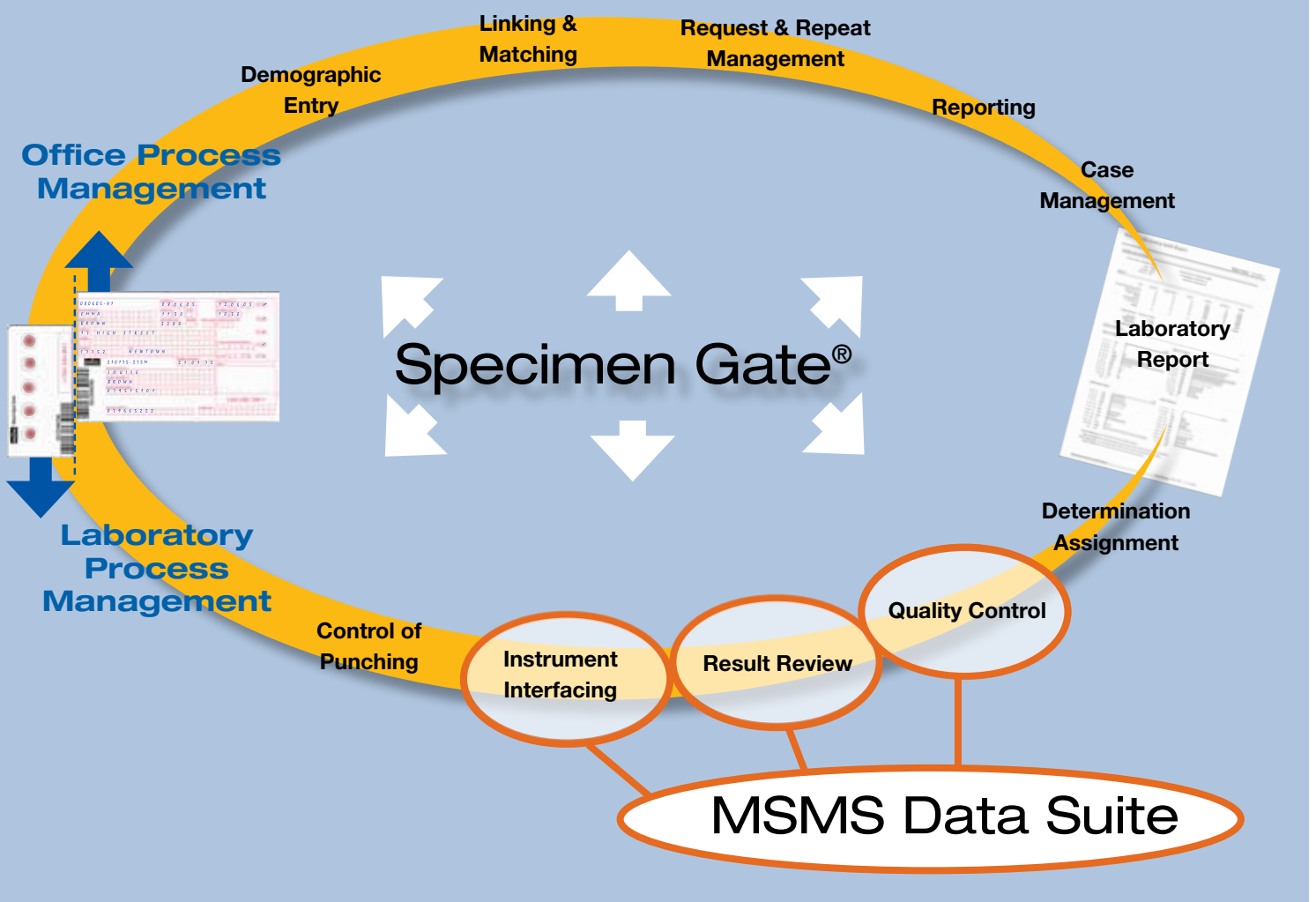


**شوگازيست**  
همراه شما در دانش و نوآوری

www.shookazist.com      تلفن: ۸۸۵۸۳۹۱۰ (۰۲۱)  
info@shookazist.com      فکس: ۸۸۵۸۳۹۳۰ (۰۲۱)  
تماس با کارشناسان بخش غربالگری: ۸۸۵۸۴۲۰۴

  
**PerkinElmer**<sup>®</sup>  
For the Better

# Effective data management



Streamlined workflow

Quality control

Expert support

## Reduce time spent on reviewing data

An MSMS system generates 100 times more data than an immunoassay system. This means that there is 100 times more data every day, which needs to be reviewed and accepted by the operator.

A primary objective of PerkinElmer's Specimen Gate® MSMS Data Suite is to minimize the time required to review the data produced by the system. To achieve this, the software gives you the following tools:

- Illustration of the status of an analyzed plate using a simple traffic light concept:
  - Green – acceptable analysis.
  - Yellow – warning, further investigation required.
  - Red – repeat analysis required.
- Pre-defined QC rules determine automatic repeats requirements.
- Analyte concentration or ratio cut-offs highlight any abnormal values.
- Ability to filter the data and display only data relevant to the review. For example, the user can choose to view analytes related only to a certain disorder instead of viewing all the thousands of data items at once.
- Ability to review Total Ion Current (TIC) curves for the entire assay on one screen instead of having to review each sample or well individually

## Store data on long term basis for future reference and statistics

The ability to store analytical data over long periods is critical for all screening laboratories. PerkinElmer's Specimen Gate® MSMS Data Suite Software stores the data into a non-proprietary database. The database can be accessed for:

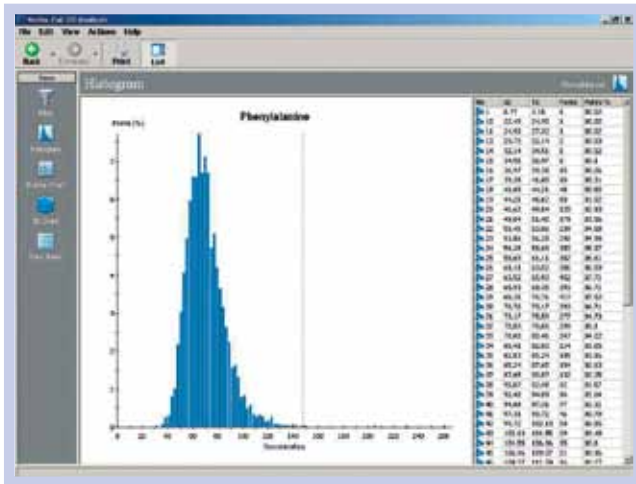
- Search of patient or assay results, e.g. for follow-up purposes
- Performance monitoring, e.g. for detecting trends in QC history
- Statistical analysis of cut-offs and other screening parameters
- Query of an audit trail of any decision made with the results
- Retrieval of TIC and spectra images from the central database instead of the instrument workstation

## Upgrade the Specimen Gate® MSMS Data Suite into a full Specimen Gate LIMS

MSMS Data Suite is part of PerkinElmer's Specimen Gate LIMS product family. This means that Specimen Gate MSMS Data Suite can be upgraded into a full LIMS system by adding other Specimen Gate software modules:

- Specimen Gate Laboratory for management of the entire laboratory work
- Specimen Gate LifeCycle to manage patient demographic data and reporting
- Specimen Gate PatientCare for case management and follow-up monitoring





A crucial aspect of any screening programme is the ability to monitor clinical performance. Optimization of your screening program is reliant on the monitoring and updating of your cut-offs based on your own population data.

To facilitate this task PerkinElmer's Specimen Gate MSMS Data Suite package uses the Cut-off Analyzer tool.

### The Cut-off Analyzer enables the laboratory to:

- Query statistics from its own result database.
- Display critical metrics for analyte concentrations or ratios, e.g. mean, median, standard deviation and percentiles
- Check the effect of cut-off values in relation to the overall performance, e.g. number of false positives
- See the effects of multi-analyte or ratio cut-offs
- See the cut-off in relation to the distribution of analyte values
- Visualize the effect that weight and/or age has for the analyte value in a scatter or a 3D plot.

Ability to use weight and/or age in plots requires Specimen Gate LifeCycle software not included in MSMS Data Suite.

PerkinElmer, Inc.  
940 Winter Street  
Waltham, MA 02451 USA  
Phone: (800) 762-4000 or  
(+1) 203-925-4602  
www.perkinelmer.com

Center of Excellence  
Genetic Screening  
Wallac Oy, PO Box 10  
20101 Turku, Finland  
Phone: + 358 2 2678 111  
Fax: + 358 2 2678 357



For a complete listing of our global offices, visit [www.perkinelmer.com/lasoffices](http://www.perkinelmer.com/lasoffices)

©2007-2010 PerkinElmer, Inc. All rights reserved. Specimen Gate and PerkinElmer are registered trademarks of PerkinElmer, Inc. All trademarks depicted are the property of their respective holders or owners. Results and statistics shown in this document are for illustrative purposes only and have no clinical validity. PerkinElmer reserves the right to change this document at any time and disclaims liability for editorial, pictorial or typographical errors.